



# MLG-COMPLETE™

## WOUND CARE

Multi-Layer Perinatal Tissue Allografts

**MLG-COMPLETE™ Wound Care Perinatal Tissue Grafts are processed to retain all naturally occurring extracellular matrix components and was issued Q4256 reimbursement code from CMS.**

### ABOUT MLG-COMPLETE™

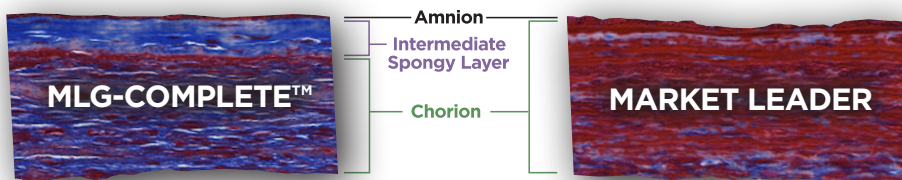
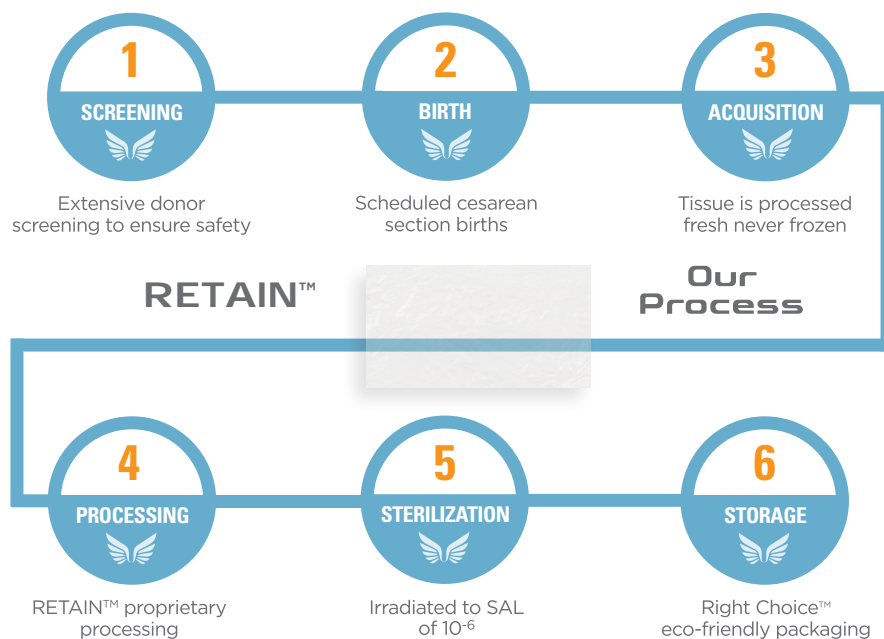
- Received TRIP designation as a 361 HCT/P allograft.<sup>1</sup>
- CMS issued Samaritan HCPCS Code Q4256 as a skin substitute.<sup>2</sup>
- MLG-COMPLETE™ is applied as an anatomical barrier providing mechanical protection.<sup>3</sup>
- MLG-COMPLETE™ is the COMPLETE perinatal membrane. All naturally occurring layers remain intact during and after processing.

### SAFETY

- Screened healthy mothers donate tissue from scheduled Cesarean section births.
- MLG-COMPLETE™ grafts are processed in accordance with FDA regulations and AATB standards.
- E-Beam sterilization provides sterility assurance level (SAL) of 10<sup>-6</sup>.

### EASY TO USE

- Best in-class graft handling.
- Ambient temperature storage with a 5-year shelf-life.
- Adheres easily to wounds of all shapes and sizes.



Histological studies show MLG-COMPLETE™ grafts have much better retention of the native perinatal tissue including naturally available collagen and glycosaminoglycan content compared to the market leader.<sup>1</sup>

**Trichrome Staining**  
**Blue - Collagen**  
**Red - Other Extracellular Matrix**

*The **Retain™** proprietary processing method eliminates harsh mechanical and chemical washes prior to sterilization to ensure maximal preservation and retention of the naturally occurring components of the birth tissue.*

# MLG-COMPLETE™

## WOUND CARE

Multi-Layer Perinatal Tissue Allografts

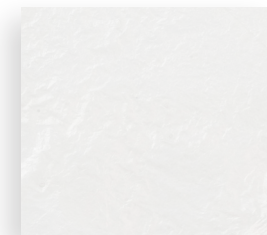
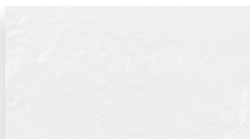


### Right Choice™ Packaging



MLG-COMPLETE™ perinatal grafts are available in four sizes to optimize clinical usage and reduce waste.

### Anatomic Sizing



### Q4256 Ordering Information

Description	Code	Size	Units
MLG COMPLETE™ Wound	MLG-24W	2x4CM	8
MLG COMPLETE™ Wound	MLG-44W	4X4CM	16
MLG COMPLETE™ Wound	MLG-48W	4X8CM	32
MLG COMPLETE™ Wound	MLG-1520W	15X20CM	300

### ► Reimbursement Support

Samaritan offers comprehensive reimbursement support for all our customers via phone, fax or email.

**Reimbursement Hotline:** 858-477-8953

**Email:** [Reimburse@samaritanbiologics.com](mailto:Reimburse@samaritanbiologics.com) • **Fax:** 855-729-5758

- Billing and Coding Questions
- Insurance Benefit Verification
- Prior Auth/Pre-Determination Requirements
- Templates for Letters of Medical Necessity
- Reimbursement Inquiries

### TO BENEFIT



*Samaritan Biologics donates at least 10% of profits before any distribution to owners to JDRF. We are dedicated to turning Type 1 into type none.*

**SAMARITAN GRAFTS**  
THE GRAFTS THAT GIVE BACK

### References

1. Data on file at Samaritan Biologics.
2. CMS Quarter 4, 2021-HCPCS application summary effective 4-1-2022.
3. Niknejad, H. et al. (2008). Properties of the amniotic membrane for potential use in tissue engineering. *Eur Cell Mater.*, 15, 88-99.

Follow Us



[INFO@SAMARITANBIOLOGICS.COM](mailto:info@samaritanbiologics.com)



**Samaritan Biologics, LLC**  
241 Germantown Bend Cove  
Cordova, TN 38018



PHONE: (901) 254-8393 • FAX: (901) 254-8387  
[SAMARITANBIOLOGICS.COM](http://SAMARITANBIOLOGICS.COM)

LB-082 R00